



MISSISSIPPI VALLEY
EQUIPMENT COMPANY



PILE DRIVING AND DRILLING EQUIPMENT



CONVENTIONAL SUSPENDED

MKT HYDRAULIC VIBRATORY DRIVERS/EXTRACTORS

- Models ranging from 25-201 tons of driving force, 16-80 tons of line pull
- Remote pendant controls for all functions
- Capable of fully submerged operation
- Enhanced crane-boom protection via unique elastomer suspension assembly
- Best combination available of hydraulic horsepower, frequency, & free-hanging weight
- Uncomplicated hydraulic circuitry
- Enclosed hydraulic power units
- Manufactured & assembled in St. Louis, MO



MODEL	V-2E	V-4E	V-5E	V-22	V-52
Driving Force	25 tons	40 tons	53 tons	100 tons	201 tons
Frequency High / Low	1,800 CPM	2,250 / 1,750 CPM	1,700 CPM	1,650 CPM	1,650 CPM
Eccentric Moment	550 in-lbs	575 in-lbs	1,300 in-lbs	2,600 in-lbs	5,200 in-lbs
Amplitude	.75 in	.63 in	1.00 in	.75 in	1.00 in
Clamping Force	25 tons	25 tons	62 tons	75 tons	100 tons
Max. Line Pull Bottom Clamp	16 tons	16 tons	30 tons	45 tons	80 tons
Height	45 in	52 in	75 in	105 in	124 in
Throat Width	14.75 in	15.25 in	13.00 in	16.00 in	16.25 in
Shipping Width	51 in	60 in	85 in	75 in	96 in
Weight w/ Standard Clamp	2,700 lbs	3,500 lbs	6,200 lbs	9,300 lbs	16,850 lbs
Hose Bundle Length	100 ft	100 ft	100 ft	150 ft	150 ft
Hose Bundle Weight	325 lbs	400 lbs	830 lbs	1,750 lbs	2,150 lbs
POWER UNIT	HP-85	HP-200 H.P	HP-200 L.P.	HP-380	HP-700
Engine HP	85 HP	200 HP	200 HP	380 HP	700 HP
Operating Speed	2,200 RPM	1,700 RPM	2,150 RPM	2,025 RPM	2,100 RPM
Hydraulic Flow	30 gpm	45 gpm	75 gpm	90 gpm	190 gpm
Hydraulic Pressure	2,500 psi	4,000 psi	3,000 psi	3,500 psi	5,500 psi
Fuel Capacity	26 gal	75 gal	75 gal	130 gal	130 gal
Hydraulic Oil Capacity	50 gal	150 gal	150 gal	150 gal	200 gal
Length	96 in	136 in	136 in	144 in	176 in
Width	44 in	54 in	54 in	62 in	64 in
Height	69 in	90 in	90 in	86 in	88 in
Weight	2,500 lbs	7,300 lbs	7,100 lbs	11,500 lbs	15,000 lbs

EXCAVATOR MOUNTED



SIDE CLAMP VIBRATORY DRIVERS/EXTRACTORS

- Removable side-clamp & Rototilt attachments
- Powered with excavator or MKT hydraulic power unit
- Operate with remote pendant, wireless remote, or joystick controls
- Rotational, side-to-side, fore / aft capabilities for pile plumbing & placement
- Low headroom applications



*** Can be configured from Excavator Mounted to Standard Crane Suspended**

MODEL	* V-2ESC	* V-4ESC	* V-5ESC	V-8ESC
Driving Force	25 tons	40 tons	53 tons	80 tons
Frequency High / Low	1,800 CPM	2,250 / 1,750 CPM	1,700 CPM	2,250 / 1,750 CPM
Eccentric Moment	550 in-lbs	575 in-lbs	1,300 in-lbs	1,150 in-lbs
Amplitude	.50 in	.50 in	.50 in	.50 in
Clamping Force	25 tons	25 tons	62 tons	62 tons
Max. Line Pull Bottom Clamp	16 tons	16 tons	30 tons	32 tons
Max. Line Pull Side Clamp	8 tons	8 tons	15 tons	16 tons
Max. Crowd w/ Side Clamp	8 tons	8 tons	15 tons	16 tons
Weight	5,750 lbs	6,500 lbs	10,750 lbs	9,250 lbs
Operating Pressure	3,000 psi	4,500 psi	3,500 psi	4,500 psi
Flow max. / min.	40 gpm	45 / 35 gpm	90 gpm	80 / 65 gpm
Excavator Size	40,000+ lb	50,000+ lb	80,000+ lb	70,000+ lb
POWER UNIT	HP-85	HP-200 H.P.	HP-200 L.P.	HP-200 H.P.
Engine HP	85 HP	200 HP	200 HP	200 HP
Operating Speed	2,200 RPM	1,700 RPM	2,150 RPM	1,700 RPM
Hydraulic Pressure	3,000 psi	4,000 psi	3,000 psi	5,000 psi
Length	96 in	136 in	136 in	136 in
Width	44 in	54 in	54 in	54 in
Height	69 in	90 in	90 in	90 in
Weight	2,500 lbs	7,300 lbs	7,100 lbs	7,300 lbs



D-SERIES SINGLE-ACTING DIESEL PILE HAMMERS

- Four-position remotely-adjustable fuel pump
- Simple splash fuel-injection system
- Automatic pressure lube system
- Fits standard box lead guides/adaptable to other lead styles
- Uses standard MKT drive caps
- Built-in safety trip mechanism
- Optional hydraulic tripping device



*** Authorized Pileco dealer**

MODEL		D8-22	D12-42	D19-42	D30-32	D36-26	D46-32	D62-22	D80-23	D100-13
App. piston weight	lbs.	1,762	2,820	4,185	6,610	7,930	10,132	13,656	17,637	22,026
Energy per blow										
<i>Maximum</i>	ft.lbs.	17,668	31,335	42,498	69,937	83,926	107,236	161,594	196,923	246,155
<i>Minimum</i>	ft.lbs.	9,439	15,129	21,254	35,403	40,923	52,288	79,004	126,262	157,830
Blows per min										
<i>Maximum</i>	bl./min.	38	36	37	37	37	37	35	36	36
<i>Minimum</i>	bl./min.	52	52	52	52	53	53	50	45	45
Consumption										
<i>Diesel fuel</i>	gal./hr.	1.00	1.20	2.00	2.64	3.04	4.23	5.28	6.60	7.93
<i>Lubrication oil</i>	gal./hr.	0.13	0.13	0.16	0.26	0.39	0.39	0.53	0.68	0.68
Capacity										
<i>Maximum</i>	gal.	5.3	6.3	20.0	17.7	23.5	23.5	25.8	40.9	40.9
<i>Minimum</i>	gal.	1.6	1.7	5.0	5.0	4.5	4.5	8.3	8.4	8.4
Weight										
<i>Hammer app.</i>	lbs.	5,520	8,260	10,000	16,000	22,445	24,650	32,135	45,265	52,880
Dimensions										
<i>Length of hammer</i>	ft.	15.4	18.3	18.3	20.5	20.6	20.6	22.7	23.6	24.1



MKT EXCAVATOR MOUNTED LEAD SYSTEM



MKT EXCAVATOR MOUNTED LEAD SYSTEM OVERVIEW:

- 20' base section for low-headroom applications
- Up to 45' overall length of 8" x 26" box leads
- 17,000 lb line pull TOOL winch, 34,000 pound line pull w/ cable 2-parted
- 12,000 lb line pull SERVICE winch for various hoisting requirements (piling, auger flighting, etc.)
- 8' vertical travel assembly
- 10° side-to-side adjustment for lead/pile plumbing
- Fore/aft capability (engineering review required based on tool & pile weight)
- Head sheave assembly & boom adapter
- Powered by excavator's hydraulics
- Modular system designed to fit specific customer needs
- In cab, operator friendly joystick controls for system functions

MKT ELS 26-45 VT SYSTEM EXCAVATOR REQUIREMENTS:

- Excavator weight (includes stick & bucket cylinder...weight does not include bucket) = 110,000 lbs
- Auxiliary Circuit hydraulic flow required = 100 to 150 gpm
- Maximum hydraulic pressure required = Up to 5075 psi (depending on tool being used in ELS system)
- 24 volt negative ground electrical system

MKT ELS COMPONENTS WEIGHTS:

- 20' base section (12,000 lbs) - includes boom adapter, vertical travel system, hydraulic control valve, tool and service winches.
- Complete ELS 26-45 VT system with 45' overall length of 8" x 26" box leads and head sheave assembly (17,000 lbs)

TOOLS AVAILABLE FOR USE IN MKT ELS SYSTEM:

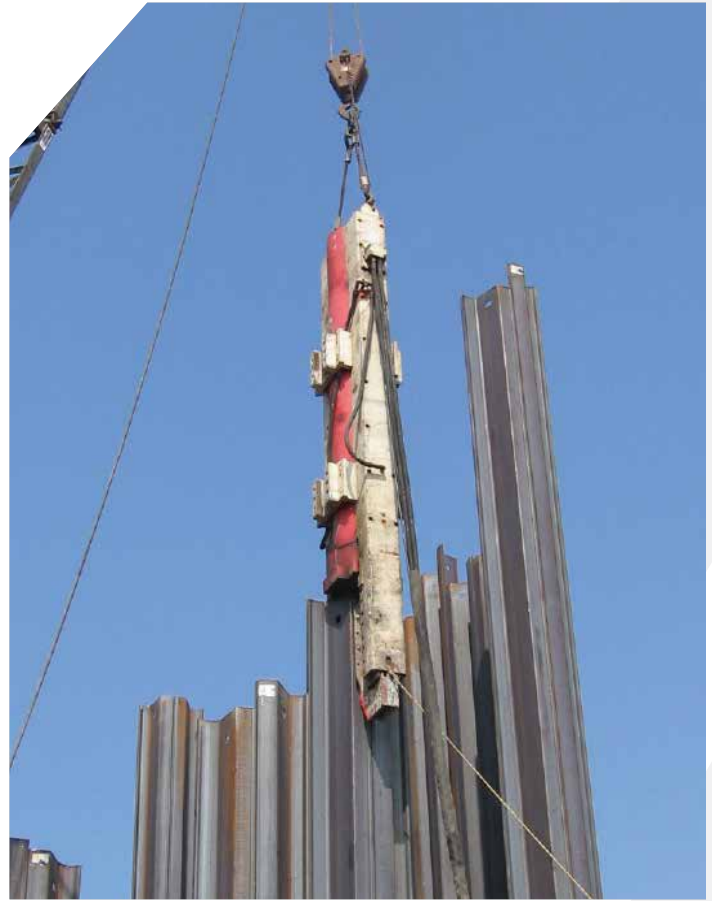
- MKT HA-18 hydraulic auger system without flighting (2,250 lbs)
- MKT HVA-40 variable torque hydraulic auger system without flighting (3,500 lbs)
- MKT V-5E hydraulic vibratory hammer (does not include side-clamp assembly) (6,200 lbs)
- MKT V-22 hydraulic vibratory hammer (8,750 lbs)
- D-19 single-acting diesel hammer with cap and striker plate (11,365 lbs)
- D-30 single-acting diesel hammer with cap and striker plate (18,005 lbs)

**When using the MKT HVA-40, MKT V-22 and the D-30 pile hammer tools, the main winch line must be 2-parted.



DAWSON DOUBLE-ACTING HYDRAULIC IMPACT HAMMER

- Dawson hammers can be used to drive a wide variety of piling sections from steel sheet piling to all types of bearing piles. The hammer systems offer excellent controllability to enhance safe operation and minimize piling damage.



HAMMER		HPH2400
Ram Weight	lbs.	4,189
Impact Velocity	ft./s.	16.3
Max Pile Energy	ft.lbs.	17,360
Min Pile Energy	ft.lbs.	7,074
Blow Rate	bpm.	80-120
Length-Lead Mounted	in.	175
Driving Sheets	in.	208
Body Diameter	in.	20.5
Weight-Lead Mounted	lbs.	13,227
Driving Sheets	lbs.	13,227
POWER UNIT		
Diesel Engine Power	hp.	90
Hydraulic System Pressure	psi.	3,300
Oil Flow Rate	gpm	40
Size (LxWxH)	in.	75x55x70
Weight	lbs.	4,410



MKT HYDRAULIC AUGER SYSTEMS

- Fixed and variable torque models
- High output & torque speeds
- Remote pendant controls for all operations
- Lead mounted tie-back installation systems
- Pre-drilling, augercast, drilling out driven pipe
- Uncomplicated hydraulic circuitry
- Manufactured & assembled in St. Louis, MO
- Enclosed power units
- Custom auger systems



AUGER	HA-18A		HVA-40	
Output Torque	18,000 ft-lbs		14,000 to 40,000 ft-lbs	
Output Speed	0-45 RPM		33 to 100 RPM	
Max. Line Pull/Crowd	12 Tons	106kN	17 tons	151kN
Lead Size	8" x 20"		8" x 26"	
Length	32 in.	813 mm	30 in.	762 mm
Width	20 ½ in.	521 mm	26 in.	660 mm
Height	66 in.	1,676 mm	60 in.	1,592 mm
Weight	2,250 lbs.	1,023 kg.	3,500 lbs.	1,592 kg
Hose Bundle Length	100 ft.	30 m	100 ft.	30 m
POWER UNIT				
Engine HP	185 hp	138 kW	365 hp	272 kW
Operating Speed	2,400 RPM		2,250 RPM	
Hyd. Flow	82 gpm	310 lpm	90 gpm	342 lpm
Hyd. Pressure	3,500 psi	241 bar	5,000 psi	345 bar
Length	120 in.	3,048 mm	132 in.	3,353 mm
Width	47 in.	1,193 mm	48 in.	1,219 mm
Height	66 in.	1,676 mm	84 in.	2,134 mm
Weight	5,750 lbs	2,616 kg	9,500 lbs	4,322 kg

EXCAVATOR MOUNTED TIMBER CLAMP



1198 Pershall Road • St. Louis, MO 63137

phone 800.325.8001

www.MVE-STL.com