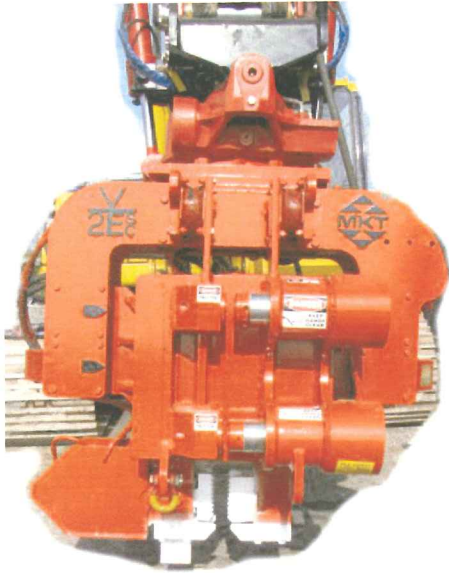


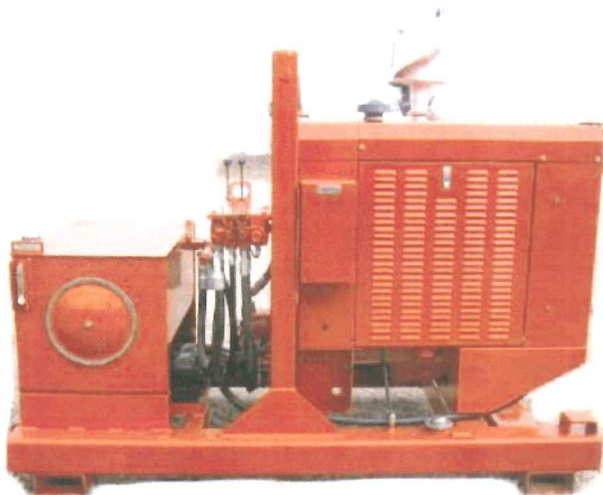
# V-2ESC/HP-85T3 VIBRATORY DRIVER/EXTRACTOR



## HAMMER

DRIVING FORCE	25 tons	223 kN
FREQUENCY		1,800 CPM
ECCENTRIC MOMENT	550 in-lbs.	635 kg-cm
AMPLITUDE	.75 in.	19 mm
CLAMPING FORCE	16 tons	145 kN
MAX. LINE PULL FREE HANGING	16 tons	145 Kn
MAX. LINE PULL W/ SIDE CLAMP	4 tons	36 kN
MAX. CROWD W/ SIDE CLAMP	4 tons	36 kN
HEIGHT OF HAMMER	48 in.	1,219 mm
THROAT WIDTH	14 3/4 in.	374 mm
SHIPPING WIDTH	57 in.	1,447 mm
WEIGHT AS SHOWN	5,300 lbs.	2,405 kg
FREE HANGING WEIGHT	3,300 lbs.	1,497 kg
HOSE BUNDLE LENGTH	100 ft.	30 m

## V-2ESC



## POWER UNIT

ENGINE HP	85 HP	63 kW
OPERATING SPEED		2,200 RPM
HYD. FLOW	30 GPM	114 lpm
HYD. PRESSURE	2,500 psi	172 bar
LENGTH	96 in.	2,348 mm
WIDTH	44 in.	1,118 mm
HEIGHT	69 in.	1,753 mm
WEIGHT	2,500 lbs.	1,138 kg

## HP-85T3



**MANUFACTURING, INC.**

1198 Pershall Road  
St. Louis, MO 63137  
(314) 388-2254

[www.mktpileman.com](http://www.mktpileman.com)

Email: [info@mktpileman.com](mailto:info@mktpileman.com)

MKT Manufacturing, Inc. reserves the right to amend these specifications at any time without notice. The only warranty is our standard written warranty. We make no other warranty, expressed or implied.