

HVA-40/HP-365DV HYDRAULIC AUGER

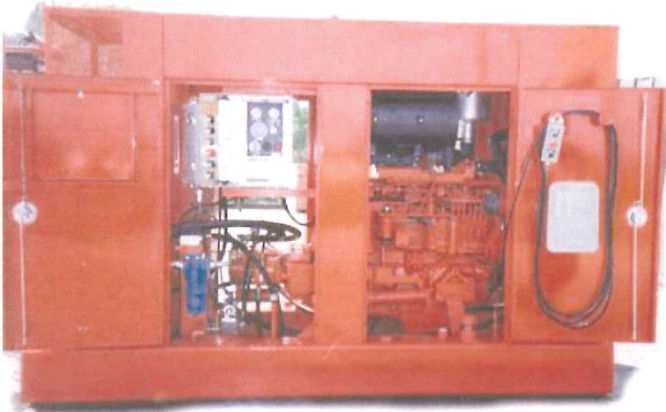


AUGER

	HVA-40	
OUTPUT TORQUE	14,000 to 40,000 ft.-lbs.	
OUTPUT SPEED	33 to 100 RPM	
MAXIMUM LINE PULL/CROWD	17 tons	151 kN
LEAD SIZE	8" x 26"	
LENGTH	30 in.	762 mm
WIDTH	26 in.	660 mm
HEIGHT	60 in.	1,524 mm
WEIGHT	3,500 lbs.	1,592 kg
HOSE BUNDLE LENGTH	100 ft.	30 m

POWER UNIT

	HP-365DV	
ENGINE HP	365 HP	272 kW
OPERATING SPEED	2,250 RPM	
HYD. FLOW	90 GPM	342 lpm
HYD. PRESSURE	5,000 psi	345 bar
LENGTH	132 in.	3,353 mm
WIDTH	48 in.	1,219 mm
HEIGHT	84 in.	2,134 mm
WEIGHT	9,500 lbs.	4,322 kg



MANUFACTURING, INC.

1198 Pershall Road
St. Louis, MO 63137
(314) 388-2254

www.mktpileman.com

Email: info@mktpileman.com